

Exam 70-293 study material

Made available by CertsKing.com



Free 70-293 Exam Preparation Questions

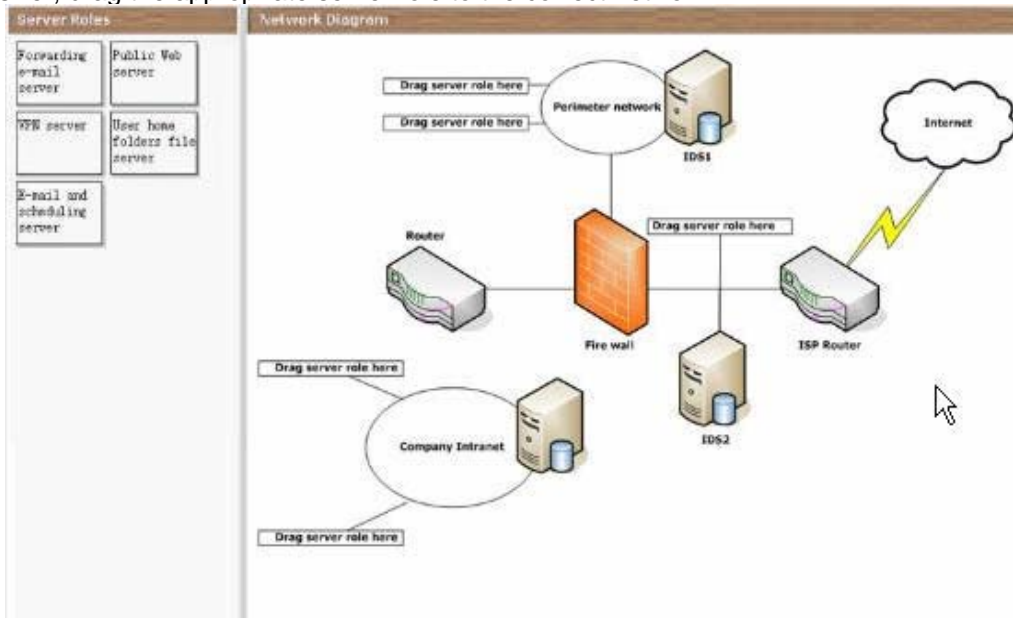
**Exam 70-293: Planning and Maintaining a Microsoft Windows Server 2003
Network Infrastructure**

Question: 1

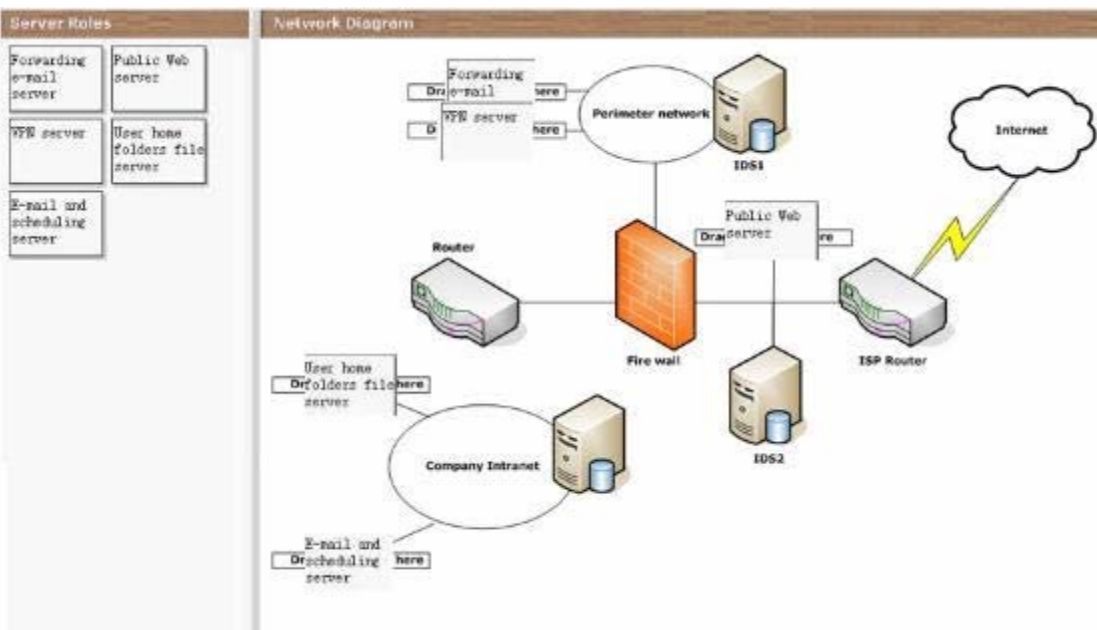
You work as a security analyst at PS co., Ltd. Whose network has a single Active Directory domain and each server runs Windows Server 2003, but now the network does not have a connection to the Internet. The company requires you to design an Internet connection solution and it must meet the requirements of the company's Internet security policy:

- (1). Traffic that originates from outside the company network must never be passed to the company intranet.
- (2). The company's public Web site must be accessible from the Internet, even in the event of the failure of any company-owned network component.
- (3). Internal company resources must not be directly accessible from the Internet.

The company's public Web site must not contain any confidential company information. So you plan to design a network solution that provides strict access control to the company intranet by means of a firewall and the new design has a perimeter network which consists of resources that external users or computers might need to access. The design also includes three computers running intrusion-detection software: IDS1, IDS2, and IDS3. Now you have to plan the placement of five servers on the network in accordance with the company's Internet security policy. How can you achieve this goal? (To answer, drag the appropriate server role to the correct network



**Answer:
Question: 2**



Which of the following parameters for the WLBS cluster control utility should you use when you want to bring a cluster server down for maintenance?

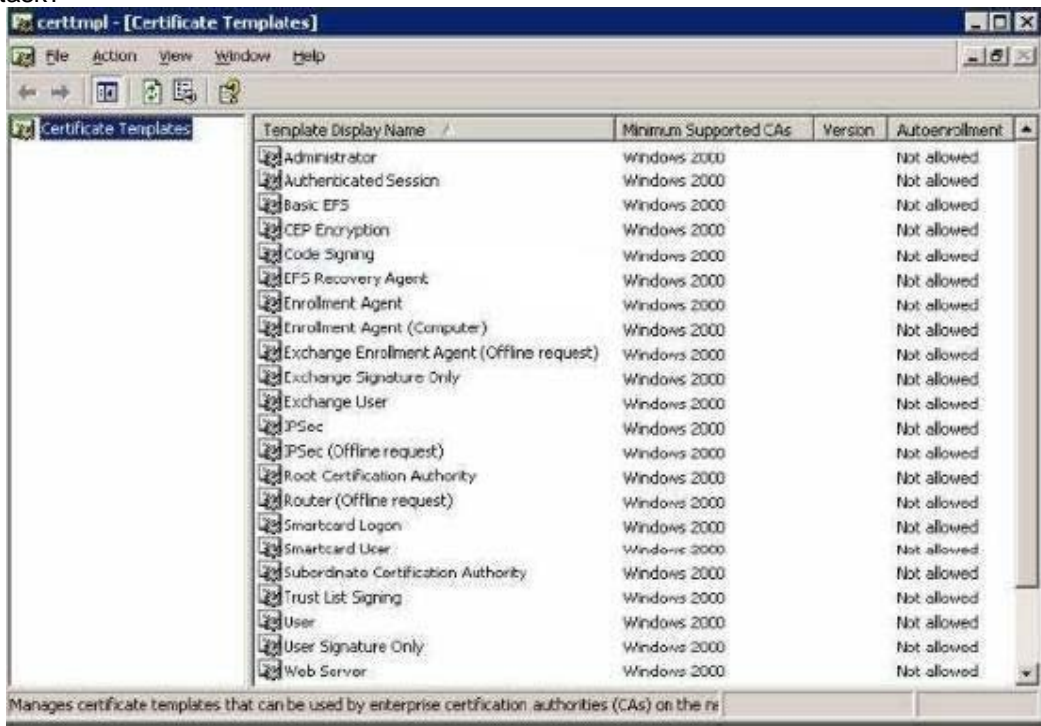
- A. DRAIN
- B. PARAMS
- C. QUERYPORT
- D. DRAINSTOP

Answer: D

Question: 3

You work as the network administrator at freetech limited. The freetech limited network consists of a single Windows 2000 Active Directory forest that contains three domains named PS-north.com, PS-south.com, and PS-east.com respectively. All client computers on the freetech limited network run Windows XP Professional. freetech limited's new written security policy requires all e-mail messages that are transmitted to other employees to be electronically signed. You implement Certificate Services and then automatically enroll all users for e-mail authentication certificates. You next install Certificate Services on two Windows Server 2003 member servers named PS-SR03 and PS-SR04 respectively. You configure PS-SR03 as the root certification authority (CA) and configure PS-SR04 as the enterprise subordinate CA. You open Certificate Templates on PS-SR04 and discover that you cannot configure certificate templates for autoenrollment. The relevant portion of the Certificate Templates administration tool is displayed in the exhibit.

You must configure Active Directory so that it supports autoenrollment of certificates. How will you accomplish the task?



- A. Run the adprep /forestprep command on the schema operations master to update the forest schema.
- B. Add PS-SR04's computer account to the Cert Publisher Domain Local group.
- C. Run the adprep /domainprep command on a Windows 2000 Server domain controller that resides in the same domain as PS-SR04.
- D. Install Active Directory on PS-SR04 that is functioning as the enterprise subordinate CA. Configure PS-SR04 as an additional domain controller in the Windows 2000 Active Directory domain.

Answer: A

Question: 4

You work as the network administrator at freetech limited. The freetech limited network consists of a single Active Directory domain named freetech limited. All computers on the freetech limited network are members of the freetech limited domain. You must implement a public key infrastructure (PKI) and need to ensure that users who log on to the domain receive a certificate which they can use to authenticate to Web sites that require certificate authentication. To do this, you create a new certificate template named Web Authentication and create a new Group Policy Object (GPO) which specifies that user certificates must be enrolled when the policy is applied. The GPO applies to all users of the freetech limited domain. You deploy an enterprise certification authority (CA) on a Windows Server 2003 computer. The following morning users complain that they do not have certificates which can be used to authenticate to Web sites. You must ensure that all users receive certificates which can be used to authenticate to Web sites which require certificate authentication. What must you do to accomplish this task? (Each correct answer presents part of the solution. Choose TWO.)

- A. Select the Reenroll All Certificate Holders command in the Web Authentication certificate template.
- B. Set the Domain Users group the Allow - Autoenroll permission for the Web Authentication certificate template.
- C. Configure the CA to enable the Web Authentication certificate template.
- D. Set the Domain Users group the Allow - Issue and Manage Certificates permission for the CA.

Answer: B, C

Question: 5

Which of the following magnetic tape drive types offers the greatest tape capacity and the fastest data transfer rates?

- A. Linear Tape-Open (LTO)
- B. 8mm
- C. Digital audio tape (DAT)
- D. Digital linear tape (DLT)

Answer: A

Question: 6

You work as the network administrator at freetech limited. The freetech limited network consists of a single Active Directory forest that contains a forest root domain named freetech limited and two child domains named us.freetech limited and uk.freetech limited. All servers on the freetech limited network run Windows Server 2003 and all client computers run Windows XP Professional. The us.freetech limited domain contains a member server named PS-SR04 that you have configured as the enterprise certification authority (CA). You configure a new user certificate template and enable the Publish certificate in Active Directory option in the certificate template. You then inform users of both the us.freetech limited and uk.freetech limited domains to enroll for user certificates. You notice that while the user certificates issued by PS-SR04 for users of the us.freetech limited domain are published to Active Directory, the user certificates for users of the uk.freetech limited domain are not being published to Active Directory. You must ensure that user certificates issued by PS-SR04 for users of the uk.freetech limited domain are published to Active Directory. What should you do next?

- A. Enable user certificate autoenrollment for all domain user accounts in the freetech limited domain.
- B. Enable user certificate autoenrollment for all domain user accounts in the uk.freetech limited domain.
- C. Add PS-SR04 to the Cert Publishers group in the freetech limited domain.
- D. Add PS-SR04 to the Cert Publishers group in the uk.freetech limited domain.

Answer: D

Question: 7

You work as the network administrator at freetech limited. The freetech limited network contains 5 database servers, named PS-DB01, PS-DB02, PS-DB03, PS-DB04, and PS-DB05. freetech limited's written security policy requires that all database servers must not have access to the Internet. The security policy also requires that a number of specific services must be disabled on all database server computers. The specific services that must be disabled are Computer Browser, File Replication, Indexing Service, Remote Registry, Server, and Task Scheduler. You make use of a Windows XP Professional client computer named PS-WS27 that has access to the Internet. On a weekly basis, you must perform

an analysis of the hotfix level of all database servers compared with the latest available updates. You want to minimize the amount of administrative effort required to do this. What should you do next?

- A. Schedule the mbsacl.exe command to run on a weekly basis on PS-WS27. Configure the mbsacl.exe parameters to use a file that contains the names of all database servers on the freetech limited network.
- B. On a weekly basis, copy the Mssecure.cab file from the Microsoft Web site to PS-WS27. Establish a Remote Desktop connection to each database server. Run the mbsacl.exe command on each database server on the freetech limited network. Configure the mbsacl.exe parameters to reference PS-WS27 as a data source for the hotfix information.
- C. On a weekly basis, start a Remote Desktop connection to each database server. Run the wmic.exe qfe command on each database server on the freetech limited network.
- D. On a weekly basis, establish a Remote Desktop connection to each database server. Run the hotfix.exe command on each database server on the freetech limited network.

Answer: B

Question: 8

You work as the network administrator at freetech limited. The freetech limited network consists of a single Active Directory domain named freetech limited. All domain controllers on the freetech limited network run Windows Server 2003 and all computers are members of the freetech limited domain. You need to implement a Public Key Infrastructure (PKI) for freetech limited. One of the requirements of the PKI design is that the certificates requested by users to encrypt files must have a validity period of two years. The current validity period of the Basic EFS certificate is one year. You open the Certificates Templates console to modify the value of the validity period for the Basic EFS certificate template but find that the console does not allow you make changes to the validity period. How will you go about changing the validity period of the certificate that users request to encrypt files?

- A. Configure an enterprise CA for each domain.
- B. Grant the Allow Full control permission for the Basic EFS certificate Template to the Domain Admins group.
- C. Create a copy of the basic EFS certificate template and then enable the new template for issuing certificate authorities.
- D. Instruct users to request a Basic EFS certificate by connecting to the CA Web Enrolment pages.

Answer: C

Question: 9

You are in the process of designing an IPSec implementation for a network containing mostly computers running Windows 2000, Windows XP, and Windows Server 2003, but with a few servers running UNIX. How can you tell whether the IPSec implementations in the UNIX operating systems are compatible with Microsoft Windows IPSec?

- A. You cannot tell until the computers are configured to use IPSec and attempt to communicate.
- B. Check the names of the IPSec policies included with the UNIX implementation. If they have the same names as the Windows operating system's default policies, the two implementations are compatible.
- C. Use a protocol analyzer to capture IPSec packets from the UNIX and Windows operating systems and compare the structures of their protocol headers.
- D. Check to see if the UNIX implementation of IPSec conforms to the standards published by the IETF.

Answer: D

Question: 10

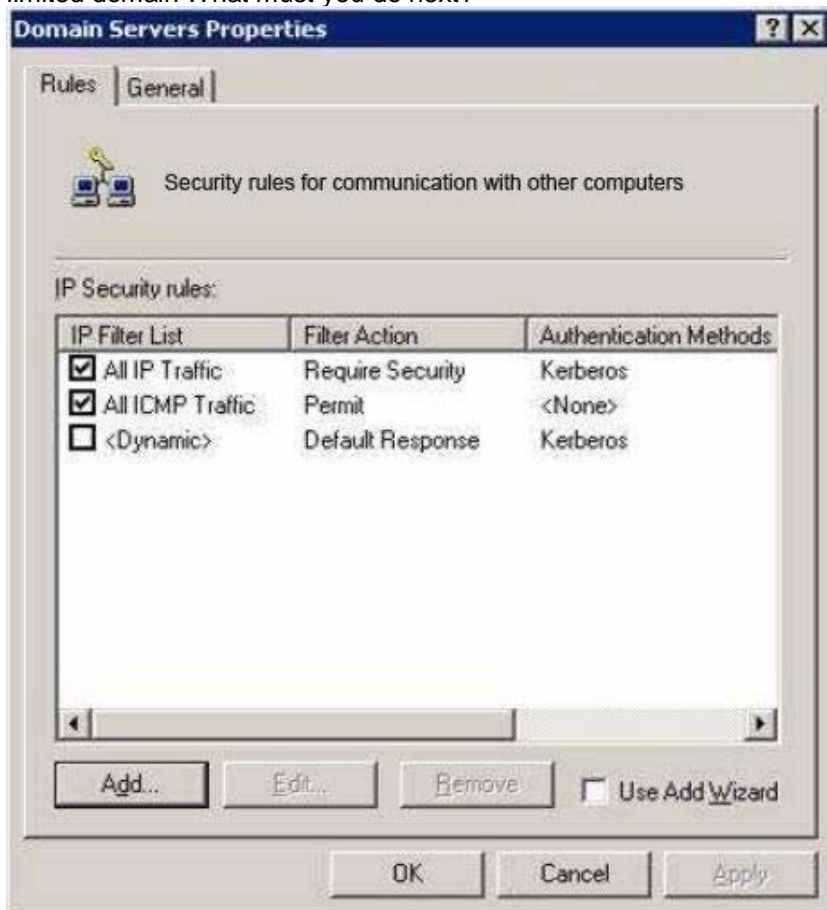
You work as the network administrator at freetech limited. The freetech limited network consists of two Active Directory domains named us.freetech limited and uk.freetech limited. You administer the us.freetech limited domain that contains users of freetech limited's Marketing department. The user objects of users in the Marketing department reside in an organizational unit (OU) named Marketing in the us.freetech limited domain. All users in the Marketing department use a Public Key Infrastructure (PKI) enabled application. The application requires users to provide client authentication certificates before they are granted access to the application. You install Certificate Services on two member servers running Windows Server 2003, named PS-SR24 and PS-SR25 respectively. You configure PS-SR24 as an enterprise subordinate certification authority (CA), and configure PS-SR25 as a stand-alone root CA. You must issue certificates that support client authentication to only those users in the Marketing department. You want to use the minimum amount of administrative effort to do this. How will you accomplish the task?

- A. Use a copy of the User certificate template and configure it to support autoenrollment. Set up the enterprise subordinate CA to issue certificates based on the User certificate template. Configure the Default Domain Policy Group Policy object (GPO) to autoenroll users for certificates.
- B. Use a copy of the Computer certificate template and configure it to support autoenrollment. Set up the enterprise subordinate CA to issue certificates based on the Computer certificate template. Configure the Default Domain Policy Group Policy object (GPO) to autoenroll computers for certificates.
- C. Use a copy of the User certificate template and configure it to support autoenrollment. Set up the enterprise subordinate CA to issue certificates based on the User certificate template. Create a new Group Policy object (GPO) and link the GPO to the Marketing OU. Configure the new GPO to autoenroll marketing users for certificates.
- D. Use a copy of the Computer certificate template and configure it to support autoenrollment. Set up the enterprise subordinate CA to issue certificates based on the Computer certificate template. Create a new Group Policy (GPO) and link the GPO to the Marketing OU. Configure the new GPO to autoenroll marketing client computers for certificates.

Answer: C

Question: 11

You work as the network administrator at freetech limited. The freetech limited network consists of a single Active Directory domain named freetech limited. All servers on the freetech limited network run Windows Server 2003 and client computers run Windows XP Professional, Windows 2000 Professional or Windows NT Workstation 4.0. freetech limited's new written security policy requires that you increase the security of data communications on the freetech limited network by implementing IPsec as far as viable. Your solution cannot include an upgrade of Windows NT Workstation 4.0 client computers to another operating system. Servers on the freetech limited network have a custom IPsec policy named Servers applied. The exhibit shows the settings of the Servers IPsec policy. To comply with the requirements of the new written security policy, you create a Group Policy object (GPO) and link it to the freetech limited domain. The new GPO assigns the Client (Respond Only) IPsec policy. The following morning users that use Windows NT Workstation 4.0 client computers complain that they can no longer connect to and access data on domain servers. You must ensure that all users of Windows NT Workstation 4.0 client computers can connect to and access data on the servers in the freetech limited domain What must you do next?



- A. Configure the All IP Traffic rule of the Servers IPSec policy to use a preshared key for authentication.
- B. Configure the All IP Traffic rule of the Servers IPSec policy to use the Request Security (Optional) filter action.
- C. Enable the default response rule for the Servers IPSec policy.
- D. Deploy the Microsoft L2TP/IPSec VPN Client software on all Windows NT Workstation 4.0 computers.
- E. Deploy the Active Directory Client Extensions software on all Windows NT Workstation 4.0 computers.

Answer: B

Question: 12

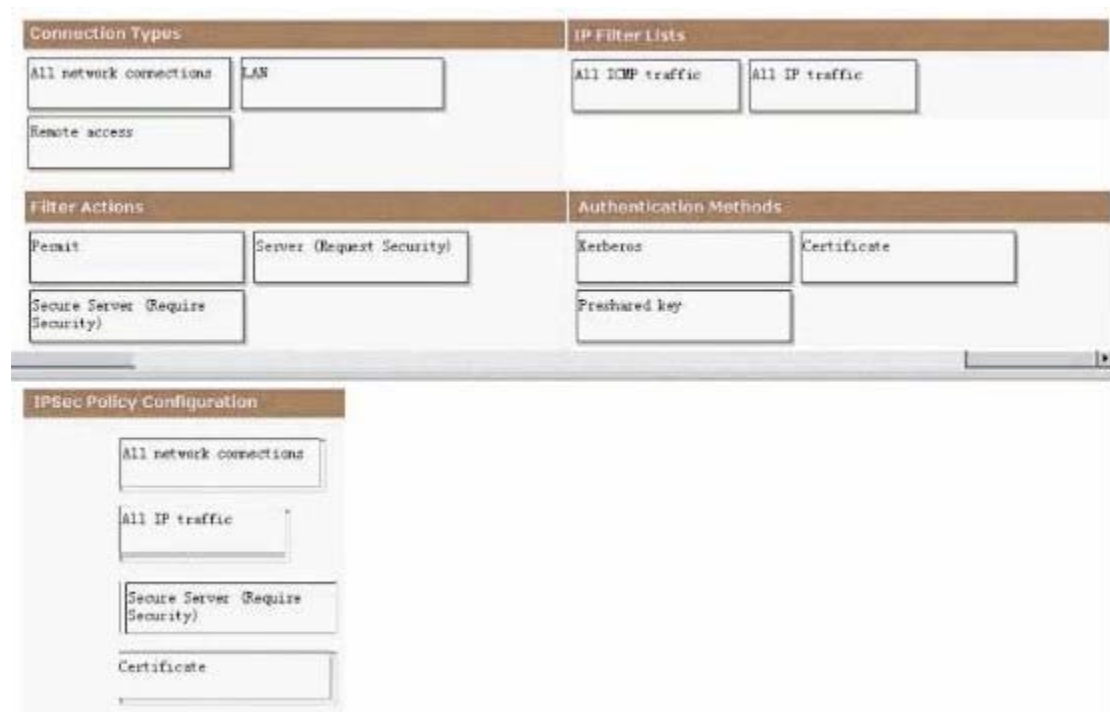
You work as the network administrator at freetech limited. The freetech limited network consists of two Active Directory forests that each contain computers which are configured to use a common root certification authority (CA). There is no trust relationship between the two Active Directory forests. Both Active Directory forests have a single domain named PS-north.com and PS-south.com respectively. The PS-north.com domain contains Windows Server 2003 computers which are only used to host confidential financial applications and data. The PS-south.com domain contains all other servers and client computers on the freetech limited network. There is a firewall configuration that separates the servers hosting confidential financial applications and data from all other computers on the freetech limited network. The firewall only allows VPN traffic from PS-south.com to a remote access server in PS-north.com. One morning, you receive instruction from the CIO to allow managers access to the confidential financial data on the servers residing in PS-north.com from their Windows XP Professional client computers. freetech limited's updated written security policy requires all communication containing financial data to be encrypted using the strongest possible IPSec encryption method that can be applied. You must configure an IPSec policy for the servers in PS-north.com to meet the encryption requirements of freetech limited's updated security policy. You must also provide managers in PS-south.com with access to the financial data.

What should you do next? Answer by dragging the proper configuration settings to the IPSec

The screenshot shows the Windows Firewall configuration interface for an IPSec policy. It is divided into several sections:

- Connection Types:** Contains 'All network connections' (with 'LAN' selected) and 'Remote access'.
- IP Filter Lists:** Contains 'All ICMP traffic' and 'All IP traffic'.
- Filter Actions:** Contains 'Permit' and 'Secure Server (Require Security)'. 'Server (Request Security)' is also visible.
- Authentication Methods:** Contains 'Kerberos', 'Certificate', and 'Preshared key'.
- IPSec Policy Configuration:** A central area with four drag targets:
 - Drag connection type here
 - Drag IP filter list here
 - Drag filter action here
 - Drag authentication method here

Answer:
Question: 13



A filter action that is configured to provide only integrity causes IPsec to use which of the following components? (Choose all that apply.)

- A. AH
- B. ESP
- C. 3DES
- D. SHA1

Answer: B, D

Question: 14

You work as the systems engineer at freetech limited. The freetech limited network consists of a large campus environment where each department is located in a separate building and equipped with its own IT staff. At present the buildings are organized into several IP subnets that are connected via dedicated routers. Each department has between one and five subnets with one RIP v2 router. A new Research and Development department is added to the company. The Research and Development building will be connected to the freetech limited Administration building via Frame Relay and a server named PS-SR24 will perform routing. PS-SR24 is configured with RRAS and implements RIP v2. You receive a report from a Research and Development user named Clive Wilson complaining that PS-SR24 is not receiving routing table updates from the freetech limited Administration routers and that he needs to add routing entries to the routing table manually. You investigate the complaint. You then discover that the expected RIP v2 broadcasts and routing table announcements between freetech limited Administration and Research and Development are non-existent. You need a solution that will ensure that the Research and Development network can communicate with the freetech limited Administration network and can send and receive automatic routing table updates as network conditions change. This means that you need to take the appropriate action on PS SR24. What should you do?

- A. PS-SR24 should be configured to use RIPv1 broadcasts.
- B. PS-SR24 should be configured to use auto-static update mode.
- C. Add the IP address ranges of freetech limited Administration to PS-SR24 accept list and announce list
- D. Add the IP addresses of freetech limited Administration routers to the router's neighbors list

Answer: D

Question: 15

You work as the network administrator at freetech limited. The network is configured as:

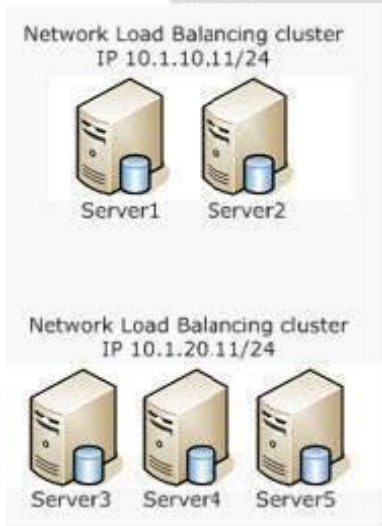
1. Each server runs Windows Server 2003;
2. The network consists of two Web servers named Server1 and Server2 and three application servers named Server3, Server4, and Server5;
3. All five servers have similar hardware and the servers are configured as Network Load Balancing clusters, as shown in the exhibit;
4. A Web services application hosted on Server1 and Server2 communicates to application components hosted on Server3, Server4, and Server5 by using the IP address 10.1.20.11;
5. The application is designed to be stateless and the Network Load Balancing settings for each server are listed in the following table.

You are required to promote the response time of the application. How can you achieve the goal?

| Host | Filtering mode | Host priority | Affinity | Load |
|---------|----------------|---------------|----------|-------|
| Server1 | Multiple | 1 | Single | Equal |
| Server2 | Multiple | 2 | Single | Equal |
| Server3 | Multiple | 1 | Single | Equal |
| Server4 | Multiple | 2 | Single | Equal |
| Server5 | Multiple | 3 | Single | Equal |

Users report that response time to the Web services application is slow. You investigate the performance of each server and observe the information listed in the following table.

| Host | Average % of CPU in use | Average % of RAM in use |
|---------|-------------------------|-------------------------|
| Server1 | 75 | 80 |
| Server2 | 85 | 75 |
| Server3 | 98 | 90 |
| Server4 | 2 | 20 |
| Server5 | 2 | 20 |



- A. You have to change the Network Load Balancing affinity setting for Server1 and Server2 to be None.
- B. You have to change the Network Load Balancing host priority for Server2 to be 1.
- C. You have to modify the Network Load Balancing affinity setting for Server3, Server4, and Server5 to be None.
- D. You have to change the Web services application to access the components on the application servers by using the IP address 10.1.10.11.

Answer: C

Question: 16

You work as the network administrator at freetech limited. The freetech limited network consists of a single Active

Directory domain named freetech limited. All servers on the freetech limited network run Windows Server 2003 and all client computers run Windows XP Professional. Your duties at freetech limited include the provision of Internet name resolution services. freetech limited contains a server named PS-SR24 which is configured to run the DNS Server service. During testing, you notice that the name resolution queries sometimes take longer than one minute to resolve and that some valid name resolution queries receive the following error message in the Nslookup command and-line tool: "Non-existent domain". You need to review the individual queries that the server handles because you suspect that there is a problem with name resolution. You want to configure monitoring on the DNS server to troubleshoot the problem. What should you do?

- A. Select the Log packets for debugging option on the Debug Logging tab in the PS-SR24 properties.
- B. Select the Errors and warnings option on the Event Logging tab in the PS-SR24 properties.
- C. Monitor the Recursive Query Failures counter in the DNS object using System Monitor.
- D. Select the Monitoring options on the Monitoring tab in the PS-SR24 properties.

Answer: A

Question: 17

You are the network administrator for a company that has recently implemented IPSec on all their computers. To provide the maximum possible protection, you have assigned the Secure Server (Require Security) IPSec policy to the Default Domain Policy GPO, so that all the computers on the network must use IPSec for all communications. However, it has come to your attention that one of the company's critical client/ server applications is not functioning properly while IPSec is in use. Therefore, you want to configure the Secure Server (Require Security) policy to permit all traffic generated by that application to be transmitted without protection.

Which of the following procedures must you perform to accomplish this goal? (Choose all that apply.)

- A. Create a new IPSec policy and assign it to the Default Domain Policy GPO along with the Secure Server (Require Security) policy.
- B. Create a new rule in the Secure Server (Require Security) policy.
- C. Create a new filter list specifying the port number used by the application.
- D. Create a new filter action that permits the computer to transmit certain traffic without IPSec security.

Answer: B, C

Question: 18

You work as the network administrator at freetech limited. The freetech limited network consists of a single Active Directory domain named freetech limited. All servers on the freetech limited network run Windows Server 2003 and all client computers run Windows XP Professional. The freetech limited network contains a server cluster that hosts the user data in shared folders that are distributed among multiple virtual file servers that run on several nodes. You have received instruction to design a backup strategy that will allow you to restore the cluster and user data if a failure occurs. The restore should be done with the minimum amount of time. What should you do periodically?

- A. Do an ASR backup of all the nodes and backup the user data.
- B. Backup the system state on all the nodes.
- C. Backup all disks on all nodes.
- D. Backup the quorum and all the user data.

Answer: A

Question: 19

You work as the network administrator at freetech limited. The freetech limited network consists of a single Active Directory domain named freetech limited. All servers on the freetech limited network run Windows Server 2000. Half the client computers run Windows 2000 Professional, and the rest run Windows XP Professional. The freetech limited consists of a Marketing department that consists of 500 employees. The freetech limited network contains two servers named PS-SR10 and PS-SR11, which reside in the Marketing department. PS-SR10 and PS-SR11 are configured as a two-node cluster. On the cluster is a very important in-house application which is contained in a cluster group named

TestApp. During routine monitoring you discover that TestApp is in a failed state. When restarting the cluster service on PS-SR11, it fails. You need to find the problem on PS-SR11 while retaining TestApp on PS-SR10.

What should you do?

- A. On PS-SR10, specify the failover threshold to 0.
- B. On PS-SR10, specify the failback threshold to 0.
- C. On PS-SR10, specify the failover period to 0.
- D. On PS-SR10, specify the failback period to 0.

Answer: A

Question: 20

Which of the following procedures can prevent users on the local network from making unauthorized use of the Remote Assistance feature?

- A. Blocking TCP port 3389 in the network's Internet firewall.
- B. Specifying the names of authorized helpers in the Offered Remote Assistance policy for Default Domain Policy GPO.
- C. Leaving the Solicited Remote Assistance policy unconfigured in the Default Domain Policy GPO.
- D. Configuring the TCP/IP client on each workstation to filter out traffic using TCP port 3389.

Answer: B, D

Question: 21

You work as a network administrator at Pass4usre.com. The company's network is configured as:

- 1.The network contains a single Active Directory domain;
- 2.The domain has a Windows Server 2003 two-node server cluster.

Recently, the security team reports that the password for the cluster service account must be changed because one of the administrators has left the company, so you fill out the necessary change control paperwork.

You are required to provide the process for changing the password in the change control form and have to change the password for the cluster service account by using the minimum amount of administrative effort.

What solution should you adopt?

- A. Run SC.exe with the change password option.
- B. Run Cluster.exe with the change password option.
- C. To change the cluster service account password on one node, and restart the node. After the first node comes back online, change the cluster service account password on the second node, and restart the node.
- D. To change the cluster service account password in Active Directory Users and Computers. Change the cluster service account password on both nodes, and restart the first node. After the first node comes back online, restart the second node.

Answer: B

Question: 22

You are a network administrator installing a new file and print server running Windows Server 2003. To give the network users a place to store their files, you create a new file system share called Documents. Which of the following share permissions does the new share have by default?

- A. The Administrators group has the Full Control permission.
- B. The Everyone group has the Full Control permission.
- C. The Everyone group has the Read permission.
- D. The Authenticated Users group has the Read permission.

Answer: C

Question: 23

You work as the network administrator at freetech limited. The freetech limited network consists of a single Active Directory domain named freetech limited. All domain controllers on the freetech limited network run Windows Server 2003 and are configured with the default security settings. The freetech limited network also has legacy accounting application that uses the LDAP protocol to query Active Directory. The legacy accounting application runs on a UNIX server named PSSR14. You want to improve the security on the freetech limited domain controllers by configuring stronger password settings, audit settings, and lockout settings. You need to ensure that your configuration changes do not adversely affect the legacy accounting application.

What should you do?

- A. On each of the freetech limited domain controllers, apply the Setup security.inf template.
- B. On each of the freetech limited domain controllers, apply the DC security.inf template.
- C. On each of the freetech limited domain controllers, apply the Securedc.inf template.
- D. On each of the freetech limited domain controllers, apply the Rootsec.inf template.

Answer: C

Question: 24

After installing a DHCP server on your network, you create a scope to assign your computers IP addresses in the 192.168.86.0/24 network. You then configure all your workstations to function as DHCP clients and restart them. All the workstations are then able to communicate with the network except one. When you execute the IPCONFIG /all-command on that workstation, you see that the computer's IP address is 169.254.0.1.

Which of the following is a possible cause of the problem?

- A. The DHCP server is down.
- B. The client computer is configured with an incorrect DHCP server address.
- C. The scope on the DHCP server does not match the network address of the server's network interface.
- D. The client computer's network cable is unplugged.

Answer: D

Question: 25

You work as the network administrator for freetech limited. All servers run Windows Server 2003. You configure a baseline security template named Baseline.inf. At freetech limited there are several operations groups that are responsible for creating templates containing settings that satisfy operational requirements. You receive the templates illustrated in the following table. The operations groups decide that in the event of conflicting settings, the priority order should be as listed in the following table. You need to create one or more Group Policy objects (GPOs) to implement the security settings. Your solution must ensure that the required administrative effort, when changes are requested by the various operations groups, is minimized.

What should you do?

| Operations group | Template name | Applies to |
|------------------|------------------|----------------------|
| File and Print | Company File.inf | File servers |
| Database | Company DB.inf | Database servers |
| Security | Company Sec.inf | All resource servers |

| Template | Priority |
|-------------------------------|----------|
| Company.Sec.inf | 1 |
| Baseline.inf | 2 |
| Specific server role template | 3 |

- A. Create a GPO and import the following templates in the following order: Baseline.inf, PSSec.inf. Create a GPO for each server role and import only the specific template for that role into each respective GPO.
- B. Create a GPO and import the following templates in the following order: PSSec.inf, Baseline.inf. Create a GPO for each server role and import only the specific template for that role into each respective GPO.
- C. Create a GPO for each server role and import the following templates in the following order: Baseline.inf, specific server role template, PSSec.inf.
- D. Create a GPO and import the following templates in the following order: PSSec.inf, PSDB.inf, PSFile.inf, Baseline.inf.

Answer: A

Question: 26

You work as the network administrator at freetech limited. The freetech limited network consists of a single Active Directory domain named freetech limited. All servers on the freetech limited network run Windows Server 2003 and all client computers run Windows XP Professional. The freetech limited network is segmented into two subnets named Subnet A and Subnet B respectively. A server named PS-SR26 runs the DHCP Server service. A domain controller named PS-DC01 runs the DNS Server service. A server named PS-SR05 is the Web server on the network. Several users complain that they cannot access the Web server hosting the company intranet site. You investigate the issue and discover the users can connect to all other resources on the network. You also find that PS-SR05 was recently moved from Subnet A to Subnet B. You use a client computer of a user to attempt to connect to PS-SR05 by using its host name, but your connection attempt fails. You find though that you can connect to PS-SR05 by using the IP address of the server. You also discover that only a few users cannot connect to PS-SR05. All other users have no problems connecting to PSSR05. You need to ensure that all users can connect to PS-SR05 by using the server's host name.

What should you do?

- A. On PS-SR05, run ipconfig/registerdns.
- B. On the client computers of users that cannot connect to PS-SR05, run ipconfig/flushdns.
- C. On the client computers of users that cannot connect to PS-SR05, run nbstat -R.
- D. On PS-SR05, run nbstat -RR.

Answer: B

Question: 27

Which of the following tools can you use to monitor the DHCP Server service? (Choose all that apply.)

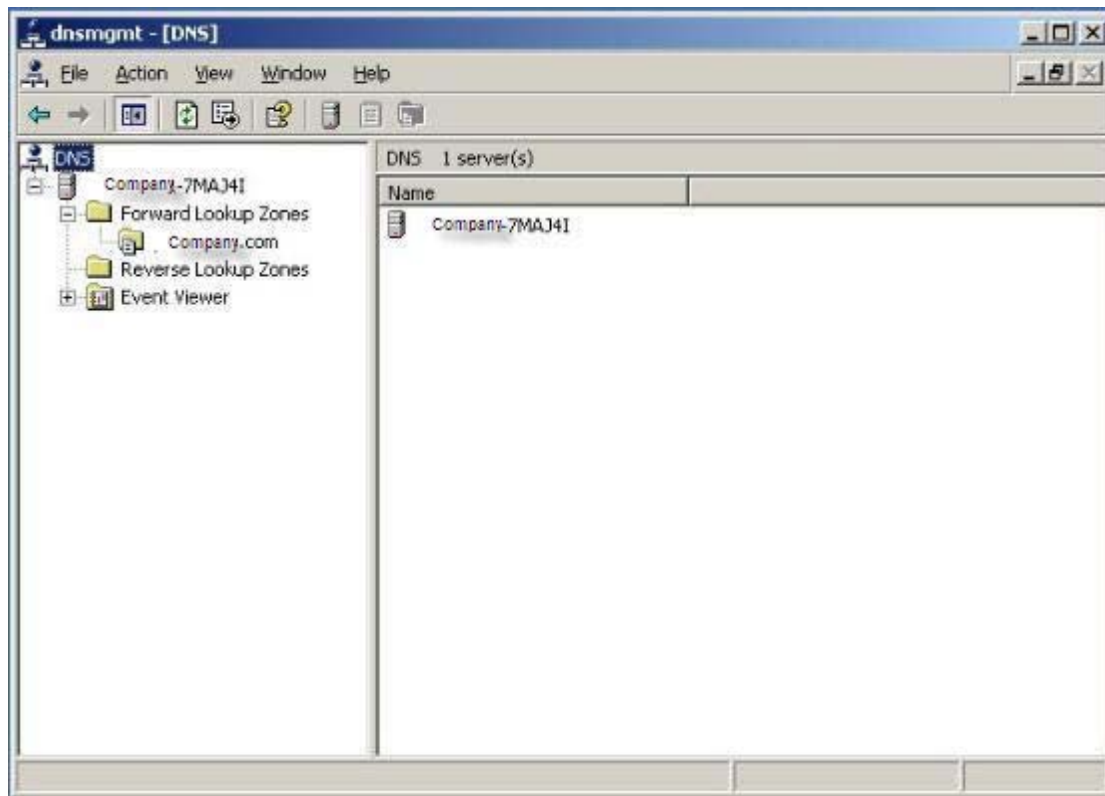
- A. The DHCP Server log in the Event Viewer console
- B. The DHCP Server performance object counters in System Monitor
- C. The DHCP log file
- D. The DHCP Server Statistics dialog box

Answer: B, C, D

Question: 28

You work as the network administrator at freetech limited. The freetech limited network consists of a single Active Directory domain named freetech limited. All servers on the freetech limited network run Windows Server 2003 and all client computers run Windows XP Professional. A Windows Server 2003 computer named PS-DC01 is configured as a DNS server and hosts the root zone of the freetech limited network. To enable users to connect to the Internet, freetech limited obtains a T1 line. The company also obtains a new domain named new.freetech limited. You create a new Active Directory-integrated DNS zone named new.freetech limited on PSDC01.

You receive instruction to ensure that all nodes on the network use the new.freetech limited domain name. You also want your DNS infrastructure to be able to forward queries to Internet DNS zones. What should you do?



- A. Delete the root zone.
- B. Ensure that recursion is disabled
- C. Configure the new zone to be a standard primary DNS zone, and not an Active Directory-integrated zone.
- D. Ensure that your user account is a member of the Domain Admins group.

Answer: A

Question: 29

You are the designer of the new network for a large company that wants no connections to the Internet whatsoever. You have created an extensive DNS namespace for the company, with multiple DNS servers at different locations. Now that the network is up and running, users are experiencing name resolution failures when they try to resolve names of computers in other offices. Which of the following options would be likely to solve the problem? (Choose all that apply.)

- A. Create an internal root.
- B. Create a secondary copy of each zone in the namespace on every DNS server.
- C. Use conditional forwarding to send the queries for each domain in the namespace to the DNS server hosting that domain.
- D. Enable secure dynamic updates to prevent DNS resource records from being corrupted.

Answer: A, B, C

Question: 30

You work as the network administrator at freetech limited. The freetech limited network consists of a single Active Directory domain named freetech limited. All servers on the freetech limited network run Windows Server 2003 and all client computers run Windows XP Professional. freetech limited contains a member server named PS-SR24. One morning a freetech limited user named Dean Austin complains that PS-SR24 responds poorly at certain occasions. You suspect that the poor performance is caused by broadcast traffic on the freetech limited network. You want to monitor PS-SR24 and you want to be alerted when broadcast traffic is high. However, you do not want to be alerted when non-broadcast network traffic is high.

What should you do?

- A. In the Performance Logs and Alerts snap-in, configure an alert trigger when the Datagrams/sec counter in the UDPv4 object is high.
- B. Monitor the Segments/sec counter of the TCPv4 object in System Monitor.
- C. Monitor the Datagrams/sec counter of the UDPv4 object in System Monitor.
- D. In the Performance Logs and Alerts snap-in, configure an alert trigger when the Datagrams/sec counter in the TCPv4 object is high.

Answer: A

Question: 31

You work as a Microsoft engineer at PS Ltd. The basic conditions of the company's network are as following:

1.The company has a main office in New York and two branch offices, one in Washington and one in Houston and the offices are connected to one another by dedicated T1 lines; 2.The company network consists of a single Active Directory domain; 3.All servers run Windows Server 2003. All client computers run Windows XP Professional; 4.All servers support firmware-based console redirection by means of the serial port; 5.The server hardware does not support any other method of console redirection and cannot be upgraded to do so; 6.Each office has its own local IT department and administrative staff. Recently, the company is re-built:

1.The IT departments from each branch office are being relocated to a new central data center in the New York office; 2.A few servers from each branch office are also being relocated to the New York data center; 3.Each branch office will retain 10 servers.

And the company sets up a new written security policy includes the following requirements:

- (1).Each server must be administered from the Los Angeles office.
- (2).Each server must be remotely administered for all administrative tasks.
- (3).Each server administration connections must be authenticated and encrypted.

The new written security policy for day-to-day server administration tasks performed on the servers has been applied to the company's network. Now you are required to plan a configuration for out-of-band management tasks for all offices to meet the new security requirements. Then which three of the following actions should you perform? (Each correct answer means part of the solution.)

- A. You have to connect each server's serial port to a terminal concentrator and connect the terminal concentrator to the network.
- B. Qualify the Telnet service with a startup parameter of Automatic on each server and configure Telnet on each server to use only NTLM authentication, then apply the Server (Request Security) IPsec policy to all servers.
- C. In each branch office, you have to enable Routing and Remote Access on a server, and configure it as an L2TP/IPsec VPN server. Configure a remote access policy to allow only authorized administrative staff to make a VPN connection.
- D. You have to enable Emergency Management Services console redirection and the Emergency Management Services Special Administration Console (SAC) on each server.

Answer: A, C, D

Question: 32

Your team is responsible for designing a Network Load Balancing cluster solution for your company's Internet Web servers. The cluster will consist of six servers, one of which also functions as the network backup server. Because of the need to perform daily backups, the cluster servers must be capable of exchanging data with each other. You have also determined that the routers on your network do not support the use of multicast MAC addresses. Your team has come up with three plans for consideration by the department manager:

Plan A calls for replacing the network's routers with models that support multicast MAC addresses and configuring all

the cluster servers to use multicast mode. Plan B calls for configuring all the cluster servers to use unicast mode and installing a second network interface adapter on each computer for cluster related traffic. Plan C calls for configuring the cluster server that also functions as a backup server to use multicast mode, and all the other servers to use unicast mode.

Which of these plans is capable of achieving the stated goals for the project? (Choose all that apply.)

- A. Plan A achieves the stated goals.
- B. Plan B achieves the stated goals.
- C. Plan C achieves the stated goals.
- D. None of the three plans achieves the stated goals.

Answer: A, B

Question: 33

You work as the network administrator at freetech limited. The freetech limited network consists of a single Active Directory domain named freetech limited and three physical networks named Network1, Network2 and Network3. Hardware-based routers are used to connect the three physical networks. All servers on the freetech limited network run Windows Server 2003 and all client computers run Windows XP Professional. A minimum of one domain controller and one DNS server is located in each physical network. A Microsoft Internet Security and Acceleration (ISA) Server array providing Internet access and certificates for the entire network is located in Network1. freetech limited's new written security policy requires that all data on the network is encrypted, that all computers transmitting data are authenticated, and that the authentication keys are stored encrypted. You implement the new security policy by configuring IPSec on all network computers and applying the Secure Server (Require Security) IPSec policy through the Default Domain Policy Group Policy object (GPO). Immediately after implanting IPSec, freetech limited users complain that they can only access resources in their local networks. You discover that Active Directory replication between domain controllers in different physical networks are not functioning and that the routers are dropping all packets. You need to ensure that users can access resources in remote networks.

What should you do?

- A. The routers must be configured to use IPsec and Kerberos for authentication and the Default Domain Policy GPO must be reconfigured to require a preshared key for IPsec authentication.
- B. The routers must be configured to use IPsec and preshared key for authentication and the Default Domain Policy GPO must be reconfigured to require a preshared key for IPsec authentication.
- C. The routers must be configured to use IPsec and a certificate for authentication and the Default Domain Policy GPO must be reconfigured to require a certificate for IPsec authentication.
- D. The routers must be configured to use IPsec and Kerberos for authentication and the Default Domain Policy GPO must be reconfigured to require a certificate for IPsec authentication.

Answer: C

Question: 34

You work as the network administrator at freetech limited. The freetech limited network consists of a single Active Directory domain named freetech limited. Wireless networking is not used in freetech limited. The freetech limited network contains Windows Server 2003 computers and Windows XP Professional computers. The exhibit shows the relevant portion of the freetech limited network. freetech limited enters into a business partnership with a company named Software Solutions, with the result that employees of Software Solutions will visit freetech limited on a regular basis.

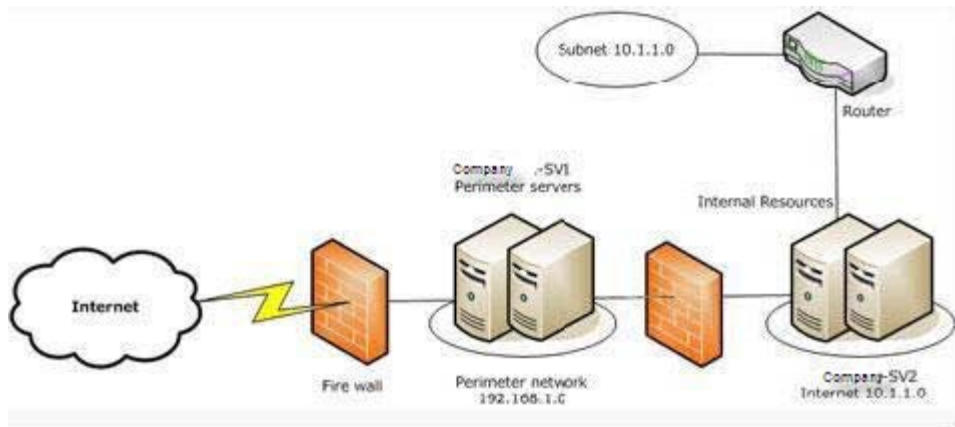
The freetech limited network administrators meet with the Software Solutions administrators. The important information obtained in this meeting on the requirements of Software Solutions employees is listed here:

- 1 The Software Solutions employees have portable computers that run Windows XP Professional.
- 2 The Software Solutions employees use a wireless network in their home office.
- 3 The Software Solutions employees will not require access to the freetech limited's internal network.
- 4 The Software Solutions employees will require access to the Internet to retrieve e-mail messages.

5 The wireless network client computers of Software Solutions employees must be protected from Internet-based attacks.

You receive a pre-configured wireless access point from Software Solutions, which its employees will use to access the Internet through the freetech limited network. You are not allowed to modify the configuration of the wireless access point. You must implement a solution that will meet the requirements of Software Solutions employees. Your solution must comply with the freetech limited's security policy. You also want to minimize administrative effort to do this.

What should you do next?



- A. Deploy Software Solutions wireless access point on a separate subnet on the freetech limited network. Configure a router to allow only SMTP, HTTP, IMAP4 traffic from the wireless network.
- B. Deploy Software Solutions wireless access point on a separate subnet in the freetech limited network. Configure a VPN from the wireless network to the Software Solutions company network.
- C. Deploy Software Solutions wireless access point on the freetech limited perimeter network. Configure Firewall1 to allow wireless network traffic from/to the Internet. Configure Firewall2 to not allow wireless traffic into freetech limited's internal network.
- D. Deploy Software Solutions wireless access point outside Firewall1 at freetech limited. Obtain IP addresses from an ISP to support the wireless users.

Answer: C

Question: 35

As the network administrator of your company's new branch office, you are in the process of installing three new Web servers running Windows Server 2003 on your network.

The branch office network, which is part of a single corporate domain, already has two servers functioning as domain controllers and three file and print servers. Corporate headquarters has given you a list of security configuration settings that must be used on all the company's web servers. To deploy these configuration settings, you must use the Active Directory Users And Computers console.

Which of the following procedures should you use to configure the settings on the new Web servers only?

- A. Access the Group Policy Object (GPO) called Default Domain Policy and then configure the settings there.
- B. Create a new GPO containing the Web server settings and then apply it to the Computers container.
- C. Create a new organizational unit called WebSvrs and then link a new GPO containing the Web server settings to it.
- D. Create a new GPO containing the Web server settings and then apply it to the site object representing the branch office.

Answer: C

Question: 36

You work as the network administrator at freetech limited. The freetech limited network consists of a single Active Directory domain named freetech limited. The freetech limited domain contains a server named PS-SR03 that stores confidential data. PS-SR03 is contained in an organizational unit (OU) named Server OU. All network connections with PS-SR03 must be encrypted using IPsec.

You enable the default Client (Respond Only) IPsec policy in the Default Domain Policy Group Policy object (GPO). You create a new GPO to enable a custom IPsec policy. You link the GPO to the Server OU. While monitoring network connections to PS-SR03, you find that network communications with the server are not being encrypted. You decide to examine all IPsec policies that are being applied to PS-SR03.

How will you go about doing this?

- A. Use Local Security Policy to examine the IP Security Policies on Local Computer on PS-SR03.
- B. Use Local Security Policy to examine the Security Options on PS-SR03.
- C. Use Resultant Set of Policy (RSOP) to execute an RSOP logging mode query to examine the IP Security Policies on Local Computer on PS-SR03.
- D. Use Resultant Set of Policy (RSOP) to execute an RSOP planning mode query to examine the Security Options on PS-SR03.
- E. Use IP Security Monitor to examine the Active Policy on PS-SR03.
- F. Use IP Security Monitor to examine the IKE Policies on PS-SR03.

Answer: C

Question: 37

You are the network administrator responsible for equipping ten new employees of the Sales department for all their computing needs. After installing their workstations, you use the Active Directory Users And Computers console to create user accounts for the new employees in the Active Directory database. You also create computer objects for their workstations in the Sales organizational unit, which contains all the Sales department's computer objects. All ten users must also be members of a group called Salespeople, which gives them access to the server resources they need. Rather than manually add each new user object to the Salespeople group, you decide to automate the process by opening the default Group Policy Object for the Sales organizational unit and adding Salespeople to the Restricted Groups folder. Then you specify the ten new user objects as members of the Salespeople group. Sometime later, the network help desk gets calls from dozens of other users in the Sales department, complaining that they cannot access their applications.

Which of the following procedures must you perform to remedy the problem? (Choose all that apply.)

- A. Add the new users to the Salespeople group using the Active Directory Users And Computers console.
- B. Add the old users to the Salespeople group using the Active Directory Users And Computers console.
- C. Use the Group Policy Object Editor console to remove the Salespeople group from the Restricted Groups folder.
- D. Use the Group Policy Object Editor console to remove the new users from the Salespeople group in the Restricted Groups folder.

Answer: A, B, C

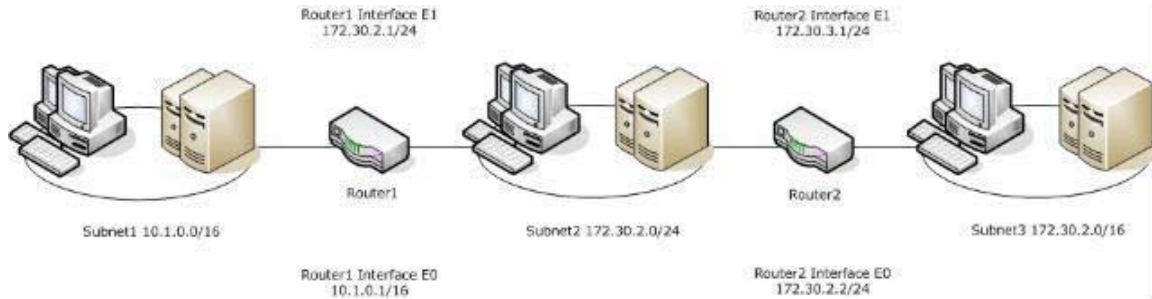
Question: 38

You work as a network administrator at freetech limited. The following exhibit shows the configuration of the network. Configuration:(1).The company applies Windows Server 2003 to take on all the servers;(2).All subnets of the network consists of 100 Windows XP Professional computers;(3).All subnets also consists of a DHCP server, which provides TCP/IP configuration information to all computers on its local subnet. Now you setup and configure Subnet3 for a new department for the company, however they encountered following troubles:

- 1.Users of Subnet3 report that they are not able to connect to resources located on servers in Subnet1 and Subnet2, they receive the error message as "Server not found." when they attempt to connect to these resources, while the users can successfully connect to resources located on servers in Subnet3;
- 2.Users of Subnet1 and Subnet2 report that they cannot connect to resources located on servers in Subnet

3.They receive the error message as "Server did not respond in a timely manner" when they attempt to connect to these resources, while the users can successfully connect to resources in both Subnet1 and Subnet2.

Then the company requires you to guarantee that all client computers must be connected to server-based resources on all subnets.How can you meet the requirement?



- A. You have to configure the DHCP server in Subnet3 to provide a subnet mask of 255.255.255.0.
- B. You have to create Router2 Interface E1 to use a subnet mask of 255.255.0.0.
- C. You have to set up the IP address of the Router2 Interface E1 as the default gateway for Subnet2.
- D. You have to create the IP address of the Router2 Interface E0 as the default gateway for Subnet3.

Answer: A

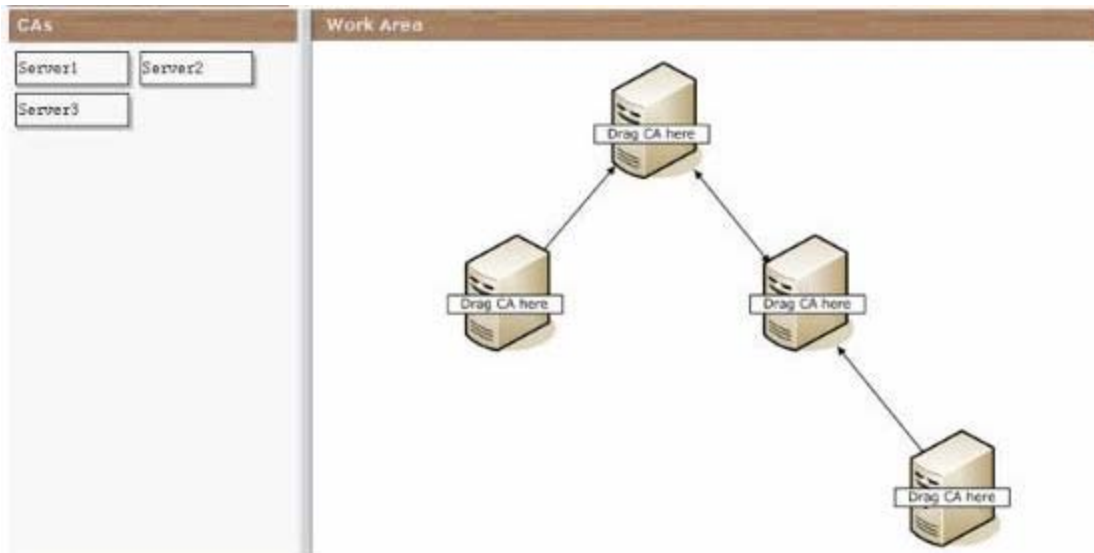
Question: 39

You work as the network administrator at freetech limited. The freetech limited network consists of a single Active Directory domain named freetech limited. The freetech limited domain contains three servers running Windows Server 2003, named PS-SR01, PS-SR02, and PS-SR03. You need to plan a public key infrastructure (PKI) for freetech limited and decide to configure the following roles for PS-SR01, PS-SR02, and PS-SR03:

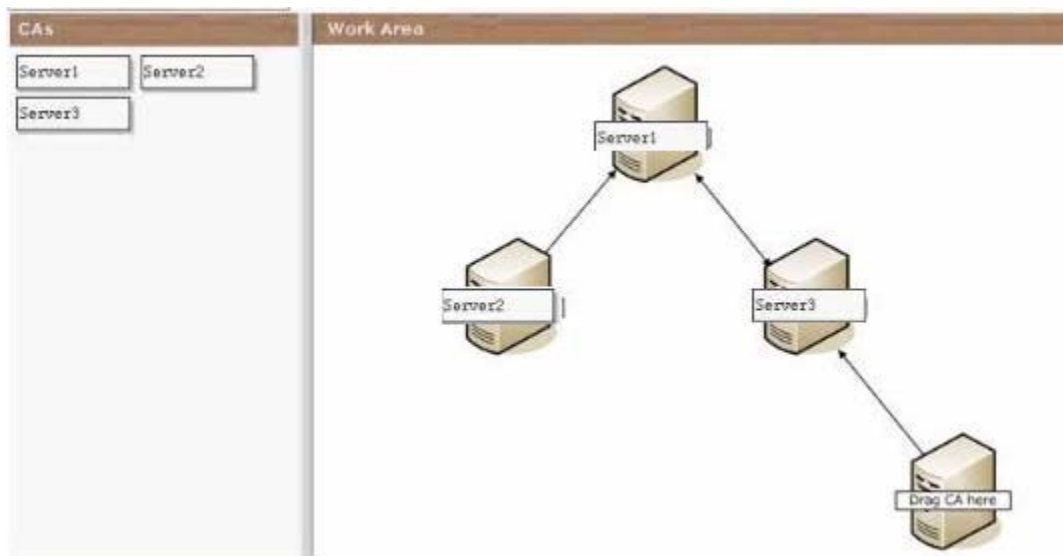
- 1 Configure PS-SR01 as the root CA: You are going to take PS-SR01 offline once the CA hierarchy has been created.
- 2 Configure PS-SR02 as a subordinate CA: You want to use PS-SR02 to only issue enrolment agent certificates.
- 3 Configure PS-SR03 as a subordinate CA: You want to use PS-SR03 to issue all other certificate types in the freetech limited domain.

You must minimize the risk of unauthorized certificates being issued, and also want to be able to revoke certificates that are issued by either of the subordinates CA should a specific server happen to be compromised. You want to do this without affecting the certificates which the other subordinate CA issued.

What should you do to achieve your goal in these circumstances? Answer by dragging the appropriate CAs to the correct positions in the accompanying work area.



Answer: Question: 40



You are reviewing the network help desk calls that your company has received during the past week, and you notice that for several isolated periods of time, multiple users were reporting an inability to access Internet Web sites. In each case, support personnel determined that the problem was caused by Domain Name System (DNS) name resolution failures, but they could find nothing wrong with the company's Windows Server 2003 DNS server. You suspect that the DNS server is experiencing intermittent denial-of-service attacks from the Internet. Which of the following procedures can you use to find out when such an attack occurs again?

- A. Create a trace log in the Performance Logs And Alerts snap-in on the DNS server, using the DNS Trace provider.
- B. Create a System Monitor graph on the DNS server using the Total Query Received counter in the DNS performance object.
- C. Use Network Monitor to capture all the DNS server's traffic, then create a display filter to isolate the Transmission Control Protocol (TCP) traffic.
- D. Create an alert with the Performance Logs And Alerts snap-in on the DNS server using the Datagrams Received/Sec counter in the UDPv4 performance object.

Answer: B, D

Question: 41

You are a new network administrator for a financial firm running a large Windows Server 2003 network that is spread out among buildings all over the corporate campus. Your supervisor has assigned you the task of checking the auditing information gathered by all the domain controllers on the network on a daily basis, to make sure that their security has not been penetrated. There are 12 domain controllers on the network, located in eight different buildings. Which of the following procedures will enable you to accomplish your task?

- A. Travel to each domain controller every morning and examine the auditing keys in the Microsoft Windows registry.
- B. Access each domain controller from your own workstation every morning, using the C\$ administrative share, and use Notepad to view the latest entries in the audit logs.
- C. Create an MMC console containing an instance of the Event Viewer snap-in for each domain controller and use it to examine the Security logs each morning.
- D. Open the Active Directory Users and Computers console on your workstation each morning and examine the auditing logs in each domain controller's computer object.

Answer: B

Question: 42

To protect the users on a network running Windows Server 2003 from having their data files intercepted during transmission, you have implemented IPSec on all the network's computers. Now you want to monitor the network to make sure that all the network transmissions are actually using IPSec. Which of the following Windows Server 2003 tools can you use to do this?

- A. Network Monitor
- B. IP Security Monitor
- C. System Monitor
- D. Performance Monitor

Answer: B

Question: 43

You are the network administrator for your company. The network consists of a single Active Directory domain. All computers on the network are members of the domain. You administer a Network Load Balancing cluster that consists of three nodes. Each node runs Windows Server 2003 and contains a single network adapter. The Network Load Balancing cluster can run only in unicast mode. The Network Load Balancing cluster has converged successfully. To increase the utilization of the cluster, you decide to move a particular application to each node of the cluster. For this application to run, you must add a Network Load Balancing port rule to the nodes of the cluster. You start Network Load Balancing Manager on the second node of the cluster. However, Network Load Balancing Manager displays a message that it cannot communicate with the other two nodes of the cluster. You want to add the port rule to the nodes of the cluster. What should you do?

- A. Add the port rule through Network Connections Properties on each node.
- B. Use Network Load Balancing Manager on the Network Load Balancing default host to add the port rule.
- C. Run the nlb.exe drain command on each node, and then use Network Load Balancing Manager to add the port rule.
- D. Change the host priority of the second node to be the highest in the cluster, and then use Network Load Balancing Manager to add the port rule.

Answer: A

Question: 44

You work as a network administrator at Pass4usre.com. The company's network is configured as:

The network contains a single Active Directory domain; The domain has a Windows Server 2003 two-node server cluster. Recently, the security team reports that the password for the cluster service account must be changed because

one of the administrators has left the company, so you fill out the necessary change control paperwork.

You are required to provide the process for changing the password in the change control form and have to change the password for the cluster service account by using the minimum amount of administrative effort. What solution should you adopt?

- A. Run SC.exe with the change password option.
- B. Run Cluster.exe with the change password option.
- C. To change the cluster service account password on one node, and restart the node. After the first node comes back online, change the cluster service account password on the second node, and restart the node.
- D. To change the cluster service account password in Active Directory Users and Computers. Change the cluster service account password on both nodes, and restart the first node. After the first node comes back online, restart the second node.

Answer: B

For complete [Exam 70-293 Training kits and Self-Paced Study Material](http://www.certsking.com/70-293)

Visit:

<http://www.certsking.com/70-293.html>



The Best Leader In Certifications

<http://www.certsking.com/>

