

Exam 000-551 study material

Made available by CertsKing.com



Free 000-551 Exam Preparation Questions

Exam 000-551: IBM Optim Implementation for Distributed Systems (2009)

Question:1

When accessing archived data through SQL Server, which two statements are true? (Choose two.)

- A. Oracle Heterogeneous Services must be configured to access SQL Server.
- B. Attunity Studio does not need to be installed on the SQL Server system.
- C. The archived data must be defined to ODM.
- D. SQL Server and Optim must be installed on the same system.
- E. The Optim Server process must be running.

Answer: B, C

Question:2

Which statement describes a generic relationship?

- A. A generic relationship is used by Optim when two tables don't have a declared relationship but the columns of the primary key match in name and data type.
- B. A generic relationship is established when Optim Security is enabled and allows the security administrator to remove duplicate relationships between tables and automatically point Access Definitions to the unique relationship.
- C. A generic relationship is used for one or more pairs of tables that have the same base name, column names, and attributes, but different creator ids.
- D. A generic relationship is a default relationship that Optim creates between any primary keys declared either in the database or Optim where the column names and datatypes match and have an index.

Answer: C

Question:3

During the Convert process, for what are Column Maps used?

- A. Invoke the Column Map Editor.
- B. Add additional functionality to the Table Maps that make up a Column Map.
- C. Provide specifications needed to match or exclude columns or when data transformations are needed.
- D. Validate that all data privacy rules established by a specific data governance policy are properly implemented.

Answer: C

Question:4

Regarding the Optim Open Data Manager (ODM), which statement is true?

- A. ODM is used to make all extended data sources seem like Oracle views.
- B. ODM is used to expose Optim Archive files to applications.
- C. Archive file security is ignored if you use Optim ODM.
- D. Optim Extract files exposed by ODM can be queried with normal ANSI SQL statements.

Answer: B

Question:5

You have extracted some data from production to use for a test. After the insert, you used the Edit function to change some values in specific rows to test certain logic in your program. You will be testing for several weeks and want to keep these special test cases, even though you may be re-loading your test data many times. Is there some way to retain these edited values so that they are not lost when the data is refreshed from the extract file?

- A. There is no way to preserve the edits, you will have to re-edit those special test cases each time the data is refreshed from the extract file.
- B. Use Compare to generate a file of changes that you can use to update the test database after each refresh.
- C. Edit the original extract file to permanently change the values in these specific rows.
- D. After the data is edited, make an extract file of your test tables, and use this new extract file to refresh your data after each test.

Answer: D

Question:6

When using the Age function within a Column Map to age date values in a source column, there are certain rules that must be followed regarding the data types that are supported. Which statement is correct?

- A. The Character or Numeric data must have a length of 256 bytes and be padded with blanks or binary zeros as needed.
- B. The source column can only contain date or timestamp data.
- C. The source column can contain date or timestamp data; character or numeric data may be used if a date format is applied to the AGE function.
- D. The date format used in the Column Map must be entered in the format used by the database.

Answer: C

Question:7

You are installing Optim at a site where they are currently using an older version of Optim. After replacing the product libraries during the installation, which statement describes what must be performed to make the new version usable?

- A. From the Configuration Tasks menu, run both the Apply Maintenance for Optim Directory Access and Apply Maintenance for DB Alias Access tasks to install the new packages/plans.
- B. The newer version of Optim is automatically compatible with the older version currently installed at the site; do nothing.
- C. From the Configuration Tasks menu, run Apply Maintenance for Optim Directory Access only. The DB Aliases are automatically updated when the Directory is updated.
- D. The Product Options file for the new version must be copied over to replace the Product Options file for the old version.

Answer: A

Question:8

When editing a table, one can right-click on any column and select "Lock". What does the Lock function do?

- A. "Lock" will request a table lock from the DBMS so that no other changes can be made.
- B. "Lock" will lock the column in place so that it is always visible during horizontal scrolling.
- C. "Lock" will lock the editing session so that no additional changes can be made to that column.
- D. "Lock" will lock the named Edit Request and finalize it in the Optim Directory.

Answer: B

Question:9

A client wants to Decommission an Oracle 9i application and an IMS application. They need to store the data in a central location. They will be accessing the data from various applications including COGNOS, Business Objects, and a home grown JDBC application. What is necessary to ensure success?

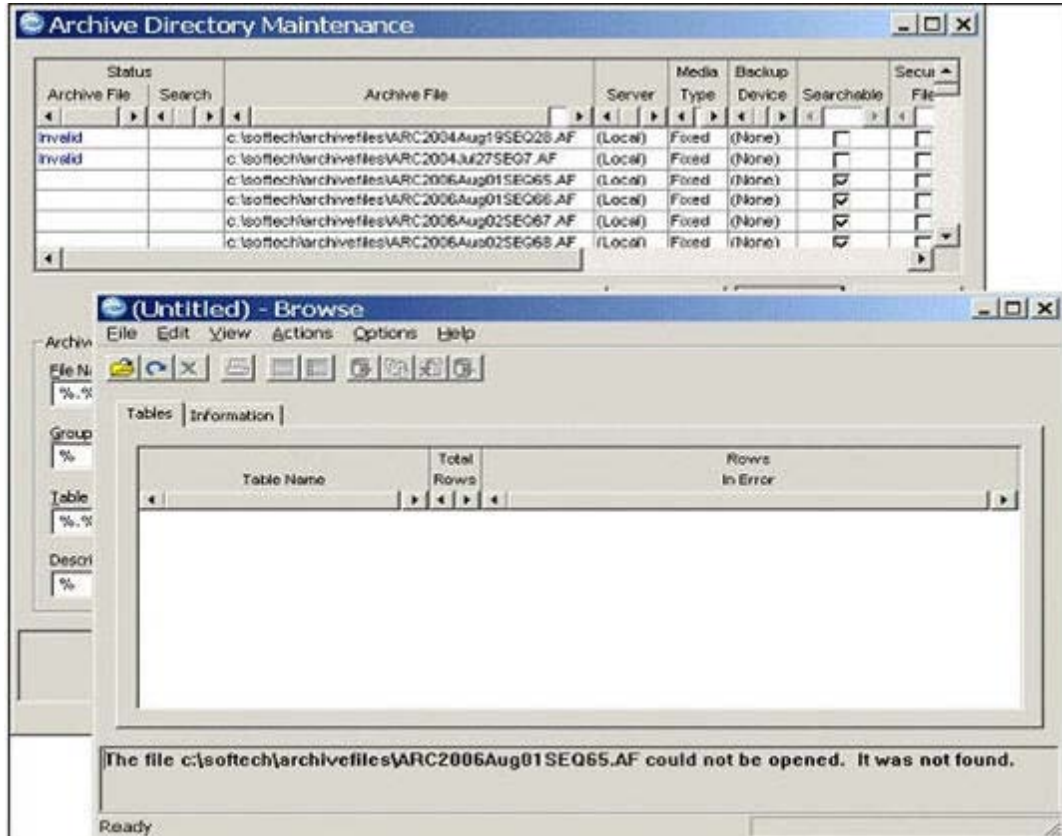
- A. An AIX Server, Windows Desktop, and Optim DRA
- B. A Sun Solaris Server and Multiple Windows Desktops with Rhumba
- C. Optim Data Growth with ODM
- D. Optim TDM, DP, and Archive with ODM

Answer: C

Question:10

Click the Exhibit button. The client understands that the first two archive files shown in the exhibit are in an inaccessible status. When they try to browse the third archive file in the list, they get the error shown in the foreground

window as shown in the exhibit. Which statement is correct?



- A. ARC2006Aug01SEQ65.AF is also corrupted and should just be deleted.
- B. ARC2006Aug01SEQ65.AF was moved; move it back into the same directory, and you should be able to browse it.
- C. The Optim Server needs to be started and then you should be able to browse ARC2006Aug01SEQ65.AF.
- D. The Windows workstation has too many applications running; shutting down other applications will free up enough memory to browse ARC2006Aug01SEQ65.AF.

Answer: B

Question:11

When a process is executed, where are default variables and prompts for variable values defined?

- A. Compare Request
- B. Convert Request
- C. Access Definition Editor
- D. Personal Options

Answer: C

Question:12

In which Optim processes can a Column Map exit be used?

- A. Archive, Restore
- B. Restore, Insert, Load, Convert
- C. Extract, Convert, Insert, Load, Delete
- D. Archive, Delete, Restore

Answer: B

Question:13

Optim relationships are used by all Optim tools. If multiple relationships exist between a pair of tables, which two statements are important to note? (Choose two.)

- A. Optim will not allow you to create duplicate relationships between tables.
- B. Optim will view two relationships between tables as possible duplicates and ignore one.
- C. Optim will view two relationships between tables as possible duplicates but will still use both if selected.
- D. Optim allows duplicate relationships but will ignore them if they are in fact duplicate.
- E. Optim will keep cycling until all relevant rows have been found.

Answer: C, E

For complete [Exam 000-551 Training kits and Self-Paced Study Material](http://www.certsking.com/000-551)

Visit:

<http://www.certsking.com/000-021.html>

CERTSKING

The Best Leader In Certifications

<http://www.certsking.com/>



For Latest 000-551 Exam Questions and study guides- visit- <http://www.certsking.com/000-551.html>